



Installing QGIS

This guide has been written for **GIS software version 3.28**, the current 'Long Term Release' at the time of writing, and for the Microsoft Windows operating system.

Note: *If you intend to use earlier versions of QGIS or indeed a different operating system such as Apple OSX or Linux you can do so but be aware that there will be differences in user interface screenshots, commands or workflows – usually the differences are minor.*

The software is freely available from: www.qgis.org/en/site/forusers/download.html

1. Open your internet browser and enter the above web address into the search bar. Your window should look like this below:

3.30.3
3.28.7 LTR


DISCOVER QGIS FOR USERS GET INVOLVED DOCUMENTATION Search English

Download QGIS for your platform


Binary packages (installers) are available from this page.
The current version is QGIS 3.30.3 's-Hertogenbosch' and was released on 26.05.2023.
The long-term repositories currently offer QGIS 3.28.7 'Firenze'.
QGIS is available on Windows, macOS, Linux, Android and iOS.
We are currently in feature freeze preceding the release of QGIS 3.32. Please consider testing the prereleases. See [road map](#).

INSTALLATION DOWNLOADS ALL RELEASES SOURCES

Download for Windows

 **Download QGIS 3.30**

Looking for the most stable version? [Get QGIS 3.28 LTR](#)

 **OSGeo4W Network Installer**

The OSGeo4W installer is recommended for regular users or organization deployments. *It allows to have several QGIS versions in one place, and to keep each component up-to-date individually without having to download the whole package.*

Since QGIS 3.20 we only ship 64-bit Windows executables.

Download for macOS

Download for Linux

- Press the link indicated above to download the long-term release of QGIS 3.28 for Windows. If using macOS or Linux, click the related drop-down arrow indicated, and download the long-term release for the relevant operating system instead.



2. Once the download has completed (this may take 30 minutes or longer depending on your internet connection), navigate to your downloads folder and locate the downloaded installer:



- Double-click the downloaded installer, to bring up the setup window

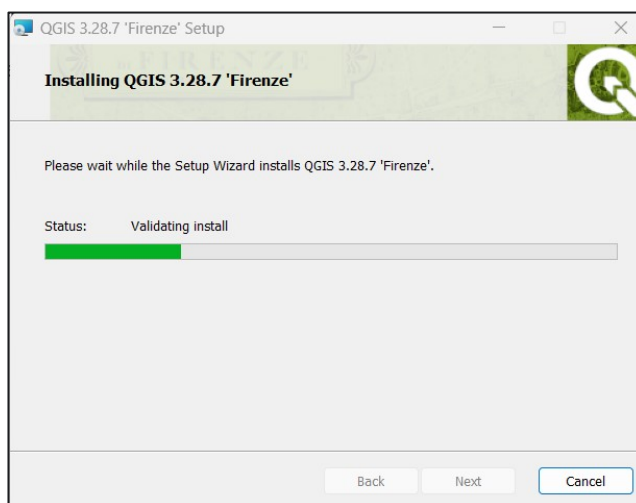
3. Navigate through the Setup window:

- Click **Next** > Tick the “I accept the terms in the License Agreement” and click **Next** >



click **Next** > click **Install**

- You will require the administrator’s permission to make changes to your PC
- The setup window will begin to install QGIS, wait till the green bar has completed loading. Then click **Finish**.






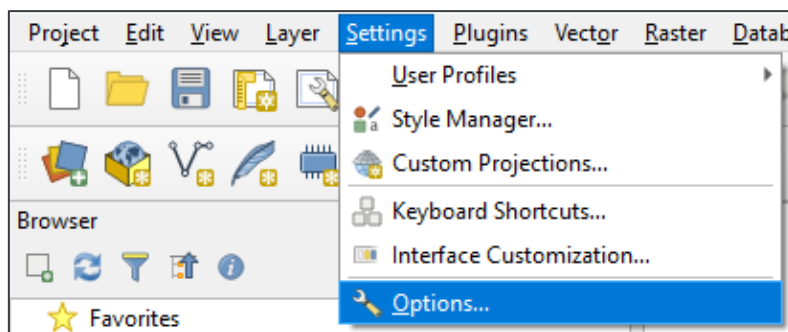
QGIS: Recommended User Settings

This document suggests a user configuration to set up your QGIS application for the purpose of this training course. However, you may find the suggested configurations useful for your ongoing work.

2. Start QGIS (the following instructions based on Windows 10 Operating System):

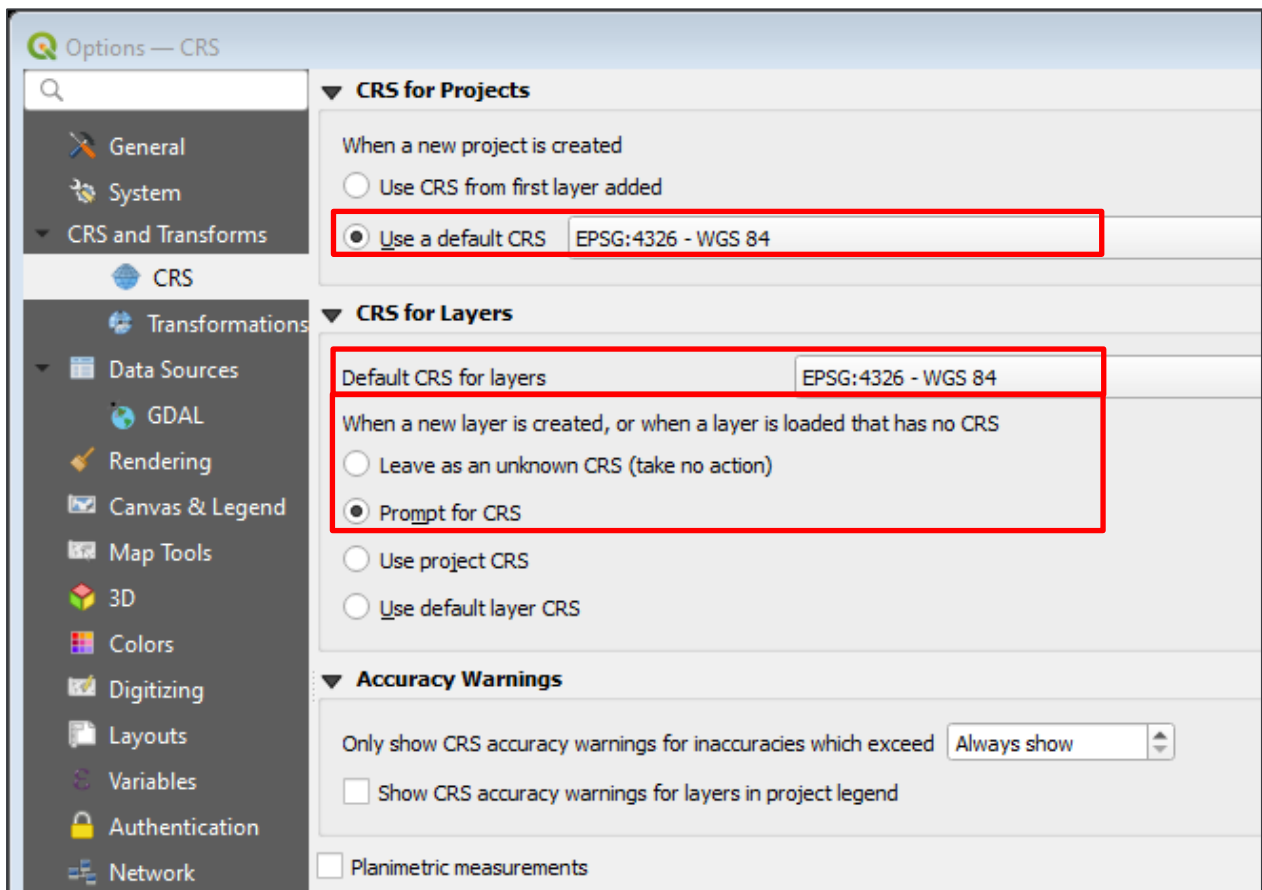
- In the bottom-left of your screen click your **Windows Start** button  then scroll down to **Q > QGIS 3.28..** then click **QGIS Desktop 3.28..**

All configuration options detailed here are accessed from the drop-down menu **Settings > Options**



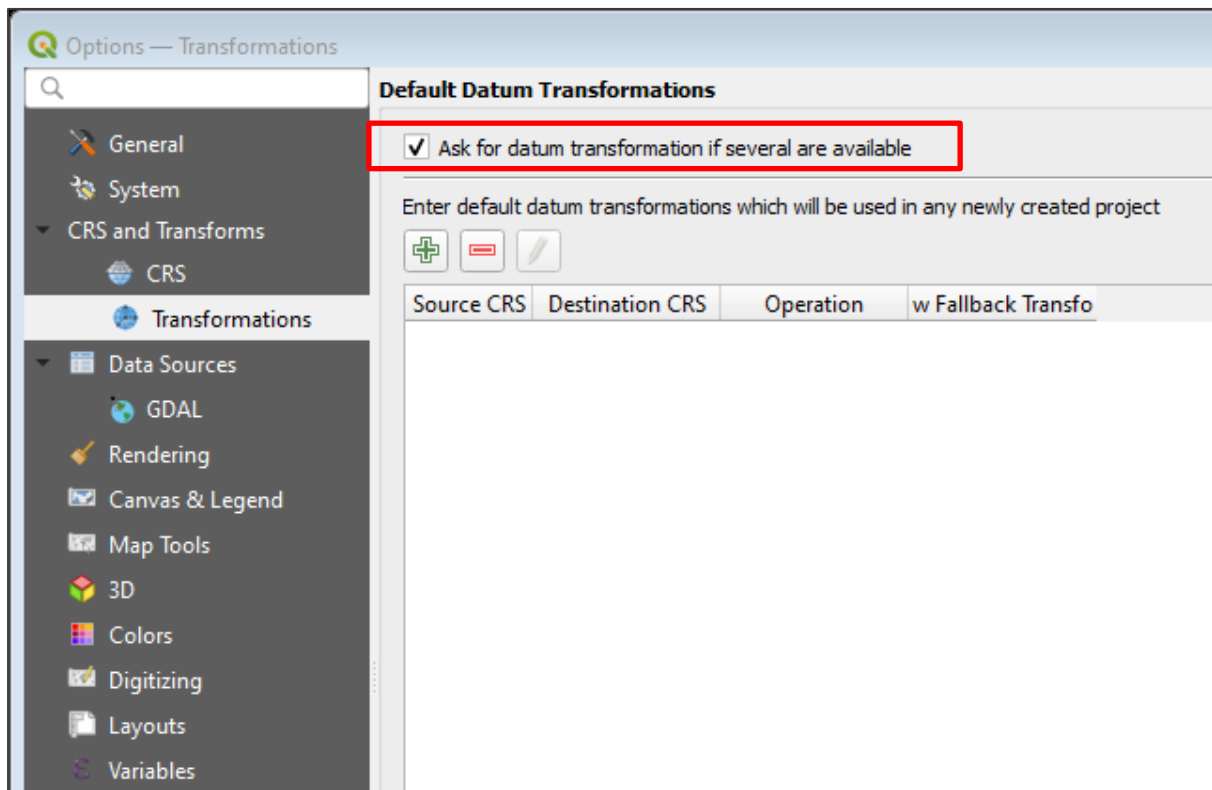
Review each of the screenshots and ensure your settings match those highlighted by the red boxes.

CRS Tab

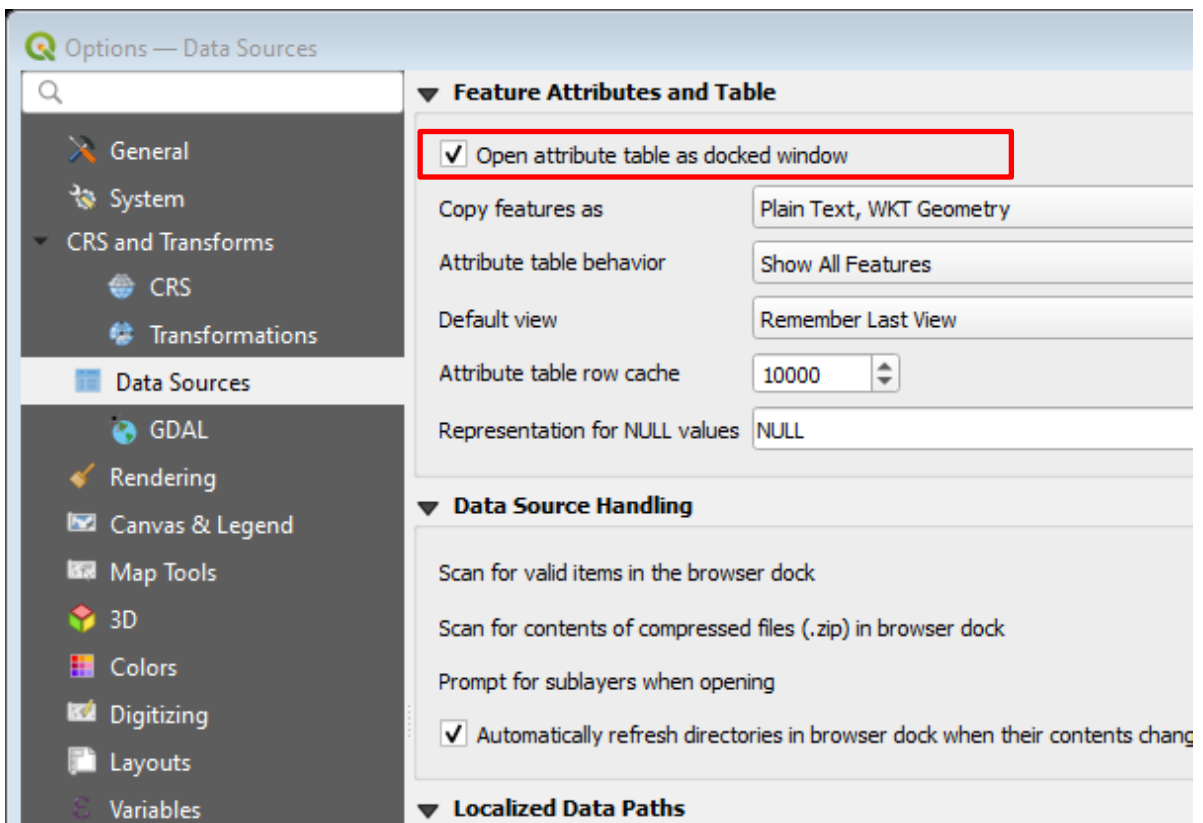




Transformations Tab

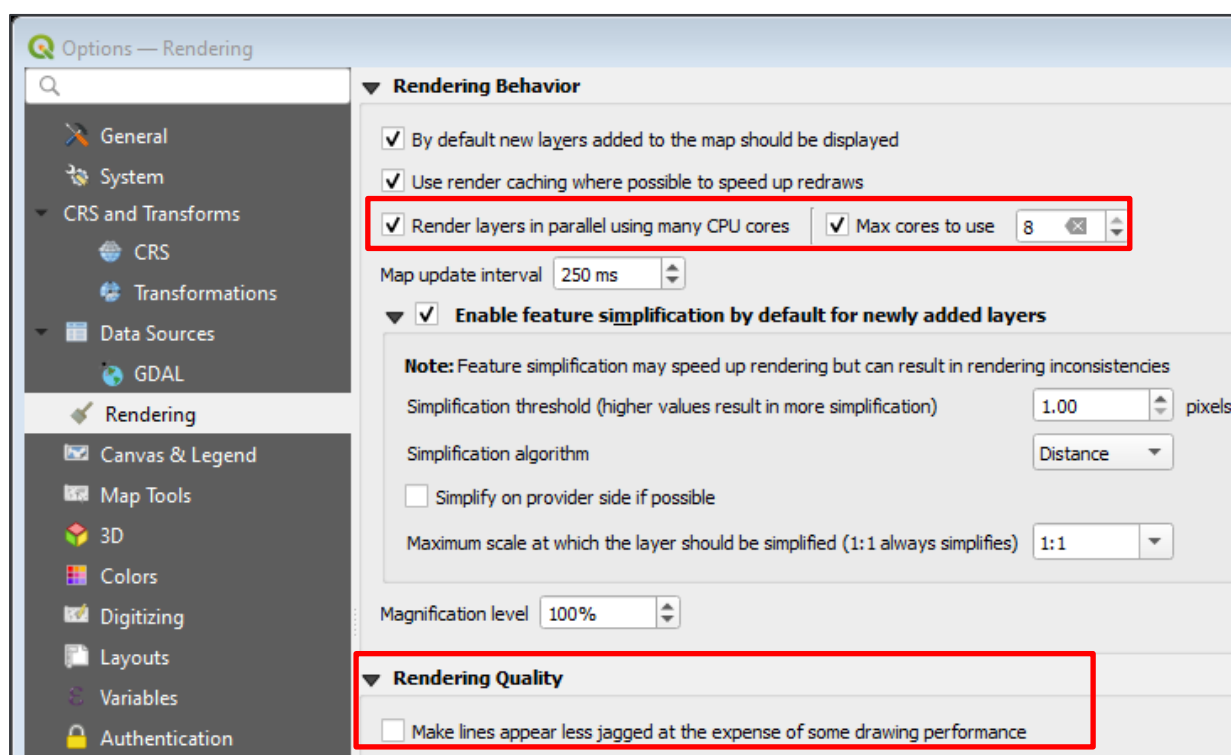


Data sources Tab





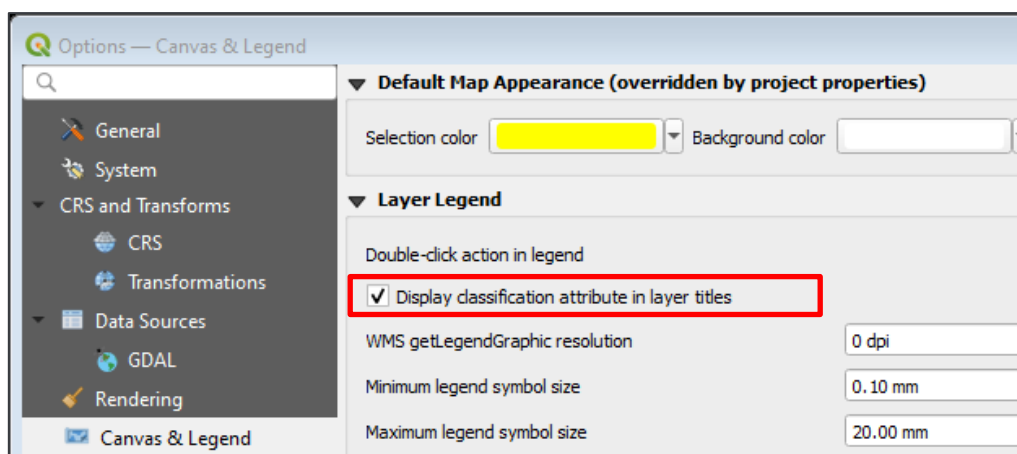
Rendering Tab



- **Notes:**

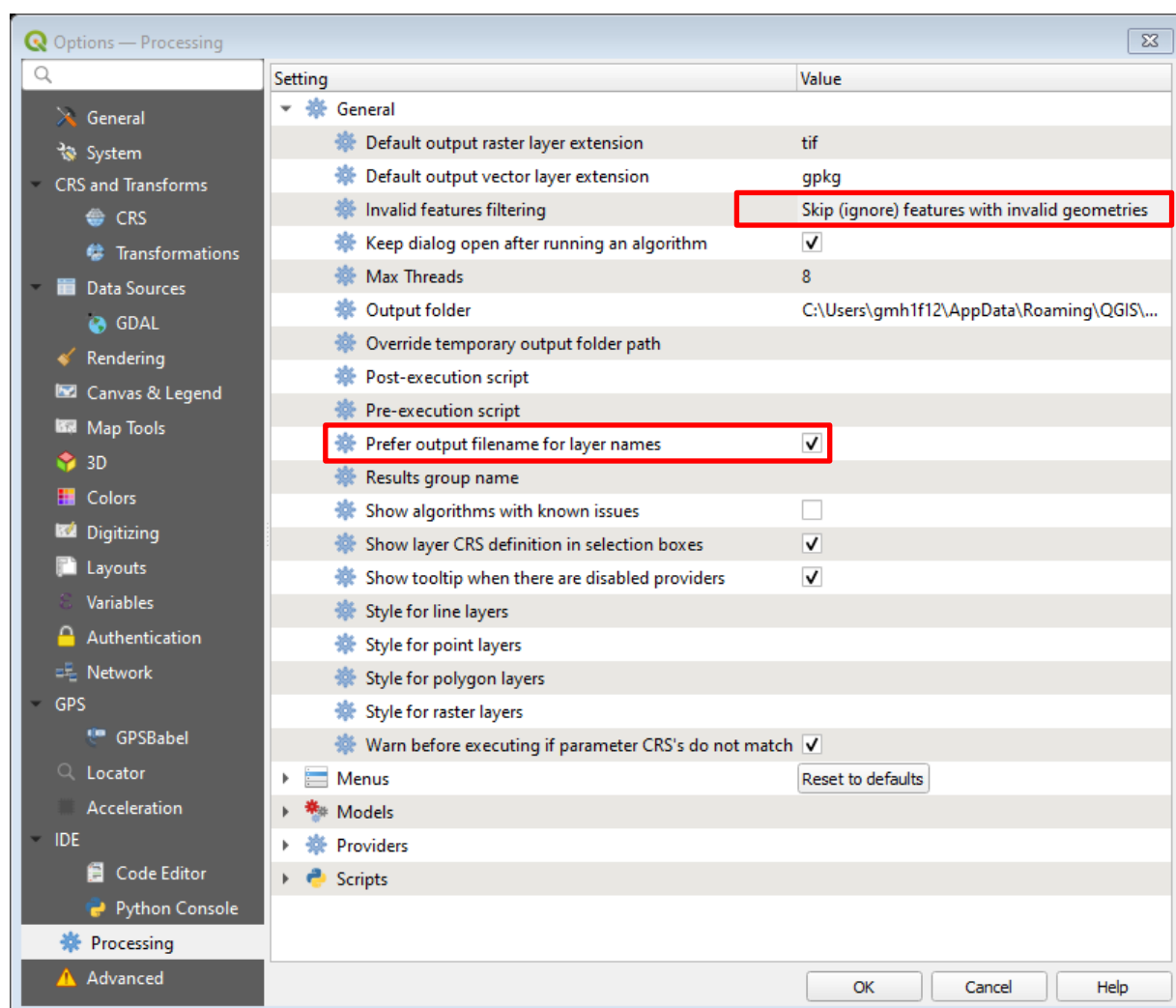
- **Render layers in parallel using many CPU cores;** increase the **Max cores to use** to the maximum for your machine. (For reference, this setting increases processing power meaning that QGIS becomes noticeably faster at displaying large image files! In the screenshot example the PC had 8 cores, yours may have more or less, we recommend increasing it to the maximum)
- **Make lines appear less jagged at the expense of some drawing performance** – **should be un-ticked** - this has little effect visually, but can produce a strange appearance when displaying contiguous polygons with a solid fill

Canvas & Legend Tab





Processing Tab



- Expand the **General** category
- Set **Invalid features filtering** to *Skip (ignore) features with invalid geometries*
 - (Note: you will need to double-click the text next to **invalid features filtering** to get the options for this setting, as indicated above)
- Tick to enable **Prefer output filename for layer names**